



### **Emballage & expédition**

emballage: 1 PCs/ctn

livraison: 30-60 jours après deposit.by mer, par avion, par exprès sont acceptables.

## **Nos Services**

Conception de client: Acceptable

Changer le matériel: couleur, forme, construction: Acceptable

Inspection générale sur la fixation avant l'emballage

Inspection de tiers: Acceptable

## **Informations sur la compagnie**

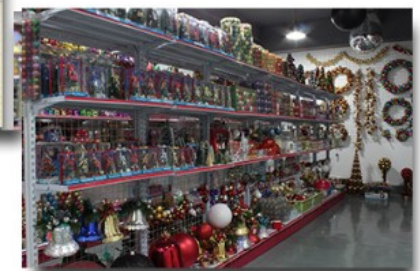
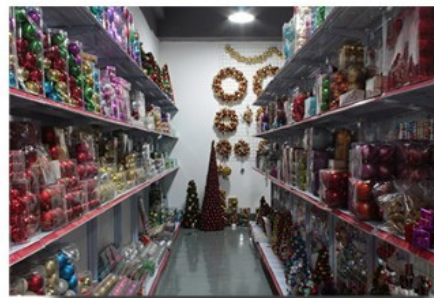
Sen Masine Noël Arts Shenzhen Co., Ltd. est membre de l'année No.5th Alibaba fournisseur d'or, usine d'arbre de Noël situé dans la ville de Jieshi, Lufeng ville de la Province du Guangdong. Ville de Jieshi est les seuls produits de Noël fabrication ville garanti par le gouvernement de la Province de Guangdong.

Nous sommes un fabricant professionnel avec plus de 20 ans d'expérience dans ce domaine; et nous sommes flexibles pour tout produit sur mesure puisque nous avons nos propres lignes de moulage et sont capables de faire les moules. Il y a plus de 300 ensembles de l'art de Noël moules dans notre usine.

Notre vision est «Meilleure qualité avec le prix favorable et le meilleur service!».

---

## **1. notre showroom**



## 2. Astucestyle s:



PVC tips



PE tips



Pine needle tips



Flocking tips



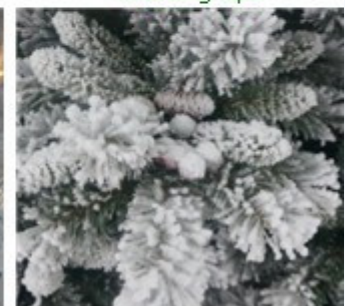
Flower needle tips



Glitter pine needle tips



White tips (branches)



Snowy tips

### 3. nos line(workshop) de production:



### 4. certification



**Test Report** No.: GZHGR2014009696 Date: MAY 06, 2014 Page 1 of 3

ZHEN JIANG YIYANG ELECTRIC CO., LTD  
CHANGJIANG INDUSTRIAL PARK, YANGZHONG DEVELOPMENT ZONE, JIANGSU PROVINCE

The following sample(s) was/were submitted and identified on behalf of the applicant as

Sample Description : 塑胶光导纤维  
SGS Ref No. : GZ10040409 S/CHEM  
Sample Receiving Date : MAY 05, 2014  
Testing Period : MAY 05, 2014 TO MAY 06, 2014

Test Requested	Result
1) To determine Contents of Cadmium(Cd), Lead(Pb), Mercury(Hg), Hexavalent Chromium(CrVI), PBBs & PBDEs in the submitted sample(s) with reference to the RoHS Directive 2002/95/EC and its subsequent amendments.	PASS

Signed for and on behalf of  
SGS-CSTC Ltd.

Yan Liu  
Supervisor

This document is issued by the Company subject to its General Conditions of Service printed overleaf, available on request or accessible at [http://www.sgs.com/terms\\_and\\_conditions](http://www.sgs.com/terms_and_conditions). It and the associated related documents issued by Terms and Conditions for Electronic Instruments or apply sgs.com/terms\_and\_conditions. Attention is drawn to the limitation of liability and jurisdiction clause defined therein. Any holder of this document is advised that information contained herein reflects the Company's findings at the time of the testing and is not intended to constitute a warranty, express or implied, of the Company's products or services. The Company's sole responsibility is to its Client and this document does not constitute a representation or warranty of any kind, express or implied, under the transaction documents. This document cannot be reproduced except in full without prior written approval of the Company. Any reproduction or modification of the content or appearance of this document is unlawful and offenders may be prosecuted to the fullest extent of the law. Results shown in this test report refer only to the sample(s) tested and such sample(s) are retained for 30 days only.



GZHG 655755  
www.sgs.com  
中国 - 广州 - 经济技术开发区科学城科城路199号 邮编: 510663 电话: 86-20-82109999 86-20-82071191 86-20-82071191

szsenhy.en.alibaba.com



**STC Test Report**

Date: 2012-07-20 Page 1 of 3

No.: DT112719

Applicant (SEM001) : Sen Masine Christmas Arts (Shenzhen) CO., Ltd.  
深圳市森海洋圣诞礼品有限公司  
2nd floor of multi-building, Jihua industrial zone, Xihuan Road, Buji Town, Shenzhen City, Guangdong Province, PRC

Description of Sample(s) : One (1) style of submitted sample(s) said to be :  
Christmas tree with LED light  
End Use: for Christmas decoration  
Country of Origin: China  
Country of Destination: EU

Date sample(s) Received : 2012-07-12

Date Tested : 2012-07-13 to 2012-07-19

Investigation(s) Requested : European Standards for Safety of Toys  
- EN71-2:2011

Conclusion(s) : EN71-2:2011  
The submitted sample(s) **complied** with the test requirement.



FAN Ru Mei, Maggie  
Authorized Signatory  
Textiles and Materials Department  
For and on behalf of  
STC (Dongguan) Company Limited

STC (Dongguan) Company Limited

88 Fuxin Road, Dongguan, China (CN) 516702  
Customer Service Hotline: 400 888 8228 Tel: (86) 769 8111 8888 Fax: (86) 769 8111 8222  
Email: [sgs@stc.org](mailto:sgs@stc.org) Website: [www.stc.org](http://www.stc.org)  
This report shall not be reproduced unless with prior written approval from STC (Dongguan) Company Limited.  
For Conditions of Issuance of this test report, please refer to the overleaf or homepage.



### STC Test Report

Date: 2012-07-20

Page 1 of 3

No.: DT112719

**Applicant (SEM001)** : Sen Masine Christmas Arts (Shenzhen) CO., Ltd.  
深圳森马海洋圣诞礼品有限公司  
2nd floor of multi-building, Jihua industrial zone, Xihuan Road, Bujia Town, Shenzhen City, Guangdong Province, PRC

**Description of Sample(s)** : One(1) style of submitted sample(s) said to be :  
Christmas tree with LED light  
End Use: for Christmas decoration  
Country of Origin: China  
Country of Destination: EU

**Date sample(s) Received** : 2012-07-12

**Date Tested** : 2012-07-13 to 2012-07-19

**Investigation(s) Requested** : European Standard for Safety of Toys  
EN 60598-2-30:2010 (2010) in conjunction with

**Conclusion(s)** : EN112:2011  
The submitted sample(s) **complied** with the test requirement.



FAN Ru Mei, Maggie  
Authorized Signatory  
Textiles and Materials Department  
For and on behalf of  
STC (Dongguan) Company Limited

STC (Dongguan) Company Limited

28 Fuxian Road, Bujia Town, Dongguan City, Guangdong, 523710  
Customer Service Centre: 400-886-0268 Fax: 0752-2711-8888 Fax: 0752-2711-8222  
Email: sg@stc.com.cn Website: www.stc.com.cn  
This report shall not be reproduced, stored in a retrieval system or otherwise transmitted from STC (Dongguan) Company Limited.



### STC (Dongguan) Company Limited EC DECLARATION OF CONFORMITY

**Reference Number:** LVD-D120619DOC

Sen Masine Christmas Arts (shenzhen) Co., Ltd.  
2nd floor of multi-building, Jihua industrial zone, Xihuan Road, Bujia Town, Shenzhen City,  
Guangdong Province, PRC

declare the product  
Description: Christmas tree with LED light  
Brand Name: SM  
Model: SM-20121

complies with the requirements of the  
EC Low Voltage Directive 2006/95/EC

Applicable Standards (EN) with their references  
EN 60598-2-30:2010 (2010) in conjunction with  
EN 60598-1:2008+A11: 2009

**General Remarks:**  
This declaration is only valid when used in conjunction with the technical file(s) refers to DE108177.  
This declaration applies specifically to the sample(s) investigated in the technical report mentioned above and not to the bulk.

The CE marking as shown below can be affixed on the product after preparation of necessary conformity documentation, as stipulated in Articles of the Council Directive 2006/95/EC.

**Manufacturer/Importer**



**Test Laboratory**



Li Chang Jun, Song  
Authorized Signatory  
Electrical Safety Department  
For and on behalf of  
STC (Dongguan) Company Limited

www.dgstc.org

Date of issue: 2012-08-08

5. Voir la Foire



## FAQ

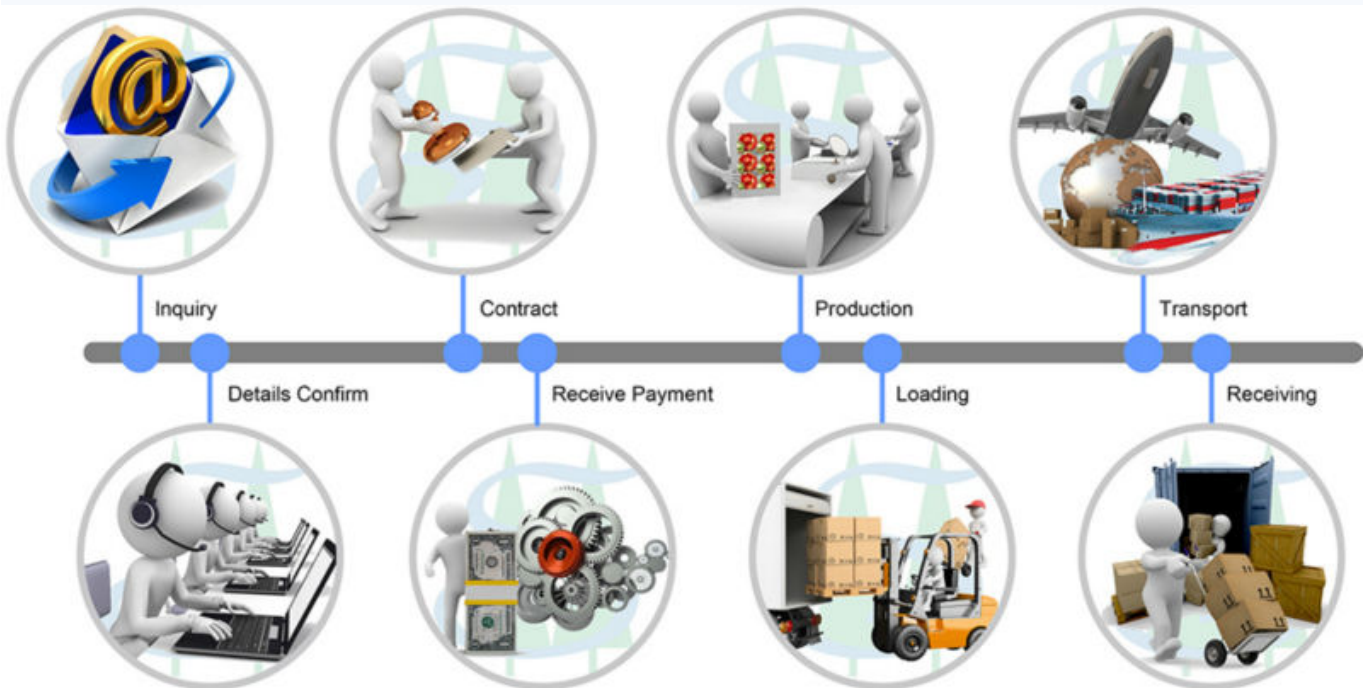
### *Pourquoi nous choisir?*

1. plus de 20 ans d'expérience & de 10 ans d'expérience d'exportation de fabrication.
2. uniques et professionnels technologies pour satisfaire une de vos requiements.
3. la qualité et le prix concurrentiel, avec une bonne réputation dans le marché d'outre-mer.
4. nos produits match EUROPE, USA baptistaire (CE, ROHS, EN71, etc.).
5. **Nous sommes BSCI & SEDEX fournisseur certifié.**
6. distribution de client:



- |         |         |         |           |          |           |           |             |
|---------|---------|---------|-----------|----------|-----------|-----------|-------------|
| France  | Italy   | Germany | U.K       | Spain    | Portugal  | Russia    | Netherlands |
| Belgium | Sweden  | Romania | Norway    | Greece   | Turkey    | Bulgaria  | Azerbaijan  |
| Poland  | Ukraine | Japan   | Malaysia  | Korea    | Singapore | U.S.A     | Canada      |
| Mexico  | Panama  | Chile   | Argentina | Columbia | Brazil    | Australia | New Zealand |

**Demander à la coopération**



**Contactez-nous**

Bienvenue visitez notre site Web pour obtenir plus d'informations produits: <http://www.szsenhy.en.alibaba.com/ProductList.html>  
 Ou me contacter pour la réponse!





Email: [rita@senhy.com](mailto:rita@senhy.com)

Skype: ritasenhy

TradeManager: cn1001806285

Téléphone: 86-755-2854-2527-211

Address: 2ème étage de D2-bâtiment, industrie  
Jihua, Xihuan Road, Buji ville, Shenzhen City,  
Guangdong Province, République populaire de  
Chine.