



### **Verpakking & verzending**

verpakking: 1 PC's / ctn

verzendkosten: 30-60 dagen na de deposit.by zee, door de lucht, door express aanvaardbaar zijn.

## **Onze diensten**

Klant ontwerp: aanvaardbaar

Wijzigen op materiaal: kleur, vorm, bouw: aanvaardbaar

Algemene inspectie inzake de vaststelling van vóór verpakking

Derde partij inspectie: aanvaardbaar

## **Bedrijfsgegevens**

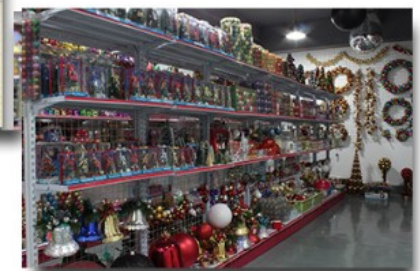
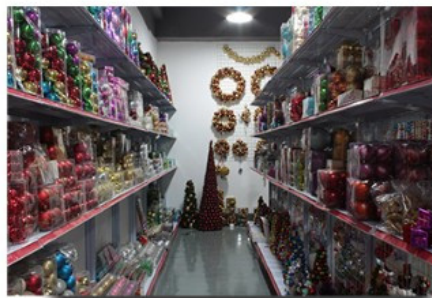
Sen Masine kerst Arts Shenzhen Co., Ltd. is lid van de No.5th jaar Alibaba Gold-leverancier, Kerstboom fabriek gelegen in Jieshi stad, Lufeng stad van Guangdong provincie. Jieshi stad is de enige Kerst producten vervaardigen stad gerechtvaardigd door Guangdong provincie regering.

Wij zijn een professionele fabrikant met meer dan 20 jaar productie ervaring op dit gebied; Wij zijn flexibel voor een op maat gemaakte producten, aangezien we onze eigen molding lijnen en zijn in staat om het maken van de mallen. Er zijn meer dan 300 soorten Kerstmis kunst mallen in onze fabriek.

Onze visie is "Beste kwaliteit met een gunstige prijs en beste service!".

---

## **1. onze showroom**



## 2. tips-stijl:



PVC tips



PE tips



Pine needle tips



Flocking tips



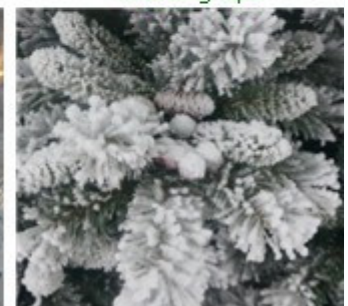
Flower needle tips



Glitter pine needle tips



White tips (branches)



Snowy tips



### 3. onze productie line(workshop):



### 4. certificering



**Test Report** No.: GZHGR2014009696 Date: MAY 06, 2014 Page 1 of 3

ZHEN JIANG YIYANG ELECTRIC CO., LTD  
CHANGJIANG INDUSTRIAL PARK, YANGZHONG DEVELOPMENT ZONE, JIANGSU PROVINCE

The following sample(s) was/were submitted and identified on behalf of the applicant as

Sample Description : 塑胶光导纤维  
SGS Ref No. : GZ10040409 5/CHEM  
Sample Receiving Date : MAY 05, 2014  
Testing Period : MAY 05, 2014 TO MAY 06, 2014

Test Requested	Result
1) To determine Contents of Cadmium(Cd), Lead(Pb), Mercury(Hg), Hexavalent Chromium(CrVI), PBBs & PBDEs in the submitted sample(s) with reference to the RoHS Directive 2002/95/EC and its subsequent amendments.	PASS

Signed for and on behalf of  
SGS-CSTC Ltd.

Yan Liu  
Supervisor

This document is issued by the Company subject to its General Conditions of Service printed overleaf, available on request or accessible at [http://www.sgs.com/terms\\_and\\_conditions](http://www.sgs.com/terms_and_conditions). It and the associated related documents issued by Terms and Conditions for Electronic Instruments or apply sgs.com/terms\_and\_conditions. Attention is drawn to the inclusion of testing and prohibition clause defined therein. Any holder of this document is advised that information contained herein reflects the Company's findings at the time of the testing and is not intended to constitute a warranty, nor does it constitute an endorsement of the product or service. The Company's sole responsibility is to its Client and this document does not constitute a representation or warranty of any kind, express or implied, under the transaction documents. This document cannot be reproduced except in full without prior written approval of the Company. Any alteration or modification of the content or appearance of this document is unlawful and offenders may be prosecuted to the fullest extent of the law. The results shown in this test report refer only to the sample(s) tested and such sample(s) are retained for 30 days only.



GZHG 655755  
www.sgs.com  
中国·广州·经济技术开发区和科学城科城路199号 邮编: 510663 电话: 86-20-82193939 86-20-82071191 86-20-82071191  
Member of the SGS Group (SGS SA)



**STC Test Report**

Date: 2012-07-20

Page 1 of 3

No.: DT112719

Applicant (SEM001) : Sen Masine Christmas Arts (Shenzhen) CO., Ltd.  
深圳市森海洋圣诞礼品有限公司  
2nd floor of multi-building, Jihua industrial zone, Xihuan Road, Buji Town, Shenzhen City, Guangdong Province, PRC

Description of Sample(s) : One(1) style of submitted sample(s) said to be :  
Christmas tree with LED light  
End Use: for Christmas decoration  
Country of Origin: China  
Country of Destination: EU

Date sample(s) Received : 2012-07-12

Date Tested : 2012-07-13 to 2012-07-19

Investigation(s) Requested : European Standards for Safety of Toys  
- EN71-2:2011

Conclusion(s) : EN71-2:2011  
The submitted sample(s) **complied** with the test requirement.



FAN Ru Mei, Maggie  
Authorized Signatory  
Textiles and Materials Department  
For and on behalf of  
STC (Dongguan) Company Limited

STC (Dongguan) Company Limited

88 Fuxin Road, Dongguan, China (CN) 511712  
Customer Service Hotline: 400 888 8228 Tel: (86) 769 8111 8888 Fax: (86) 769 8111 8222  
Email: [sgs@stc.org](mailto:sgs@stc.org) Website: [www.stc.org](http://www.stc.org)  
This report shall not be reproduced unless with prior written approval from STC (Dongguan) Company Limited.  
For Conditions of Issuance of this test report, please refer to the overleaf or homepage.



### STC Test Report

Date: 2012-07-20

Page 1 of 3

No.: DT112719

**Applicant (SEM001)** : Sen Masine Christmas Arts (Shenzhen) CO., Ltd.  
深圳森马海洋圣诞礼品有限公司  
2nd floor of multi-building, Jihua industrial zone, Xihuan Road, Bujia Town, Shenzhen City, Guangdong Province, PRC

**Description of Sample(s)** : One(1) style of submitted sample(s) said to be :  
Christmas tree with LED light  
End Use: for Christmas decoration  
Country of Origin: China  
Country of Destination: EU

**Date sample(s) Received** : 2012-07-12

**Date Tested** : 2012-07-13 to 2012-07-19

**Investigation(s) Requested** : European Standard for Safety of Toys  
EN 60598-2-20:2010:2010

**Conclusion(s)** : EN112:2011  
The submitted sample(s) **complied** with the test requirement.



*Maggie*  
FAN Ru Mei, Maggie  
Authorized Signatory  
Textiles and Materials Department  
For and on behalf of  
STC (Dongguan) Company Limited

STC (Dongguan) Company Limited

28 Fuxian Road, Bujia Town, Dongguan City, Guangdong, 512719  
Customer Service Phone: 86-755-22181111 Fax: 86-755-22181111  
Email: stc@dgstc.org Website: www.dgstc.org  
This report shall not be reproduced, stored in a retrieval system or used in any form without approval from STC (Dongguan) Company Limited.



### STC (Dongguan) Company Limited EC DECLARATION OF CONFORMITY

**Reference Number:** LVD-D120619DOC

Sen Masine Christmas Arts (shenzhen) Co., Ltd.  
2nd floor of multi-building, Jihua industrial zone, Xihuan Road, Bujia Town, Shenzhen City,  
Guangdong Province, PRC

declare the product  
Description: Christmas tree with LED light  
Brand Name: SM  
Model: SM-20121

complies with the requirements of the  
EC Low Voltage Directive 2006/95/EC

Applicable Standards (EN) with reference numbers  
EN 60598-2-20:2010:2010 in conjunction with  
EN 60598-1:2008+A11: 2009

**General Remarks:**  
This declaration is only valid when used in conjunction with the technical file(s) refers to DE108177.  
This declaration applies specifically to the sample(s) investigated in the technical report mentioned above and not to the bulk.

The CE marking as shown below can be affixed on the product after preparation of necessary conformity documentation, as stipulated in Articles of the Council Directive 2006/95/EC.

**Manufacturer/Importer**



**Test Laboratory**



*Li Chang Jun*  
Li Chang Jun, Dong  
Authorized Signatory  
Electrical Safety Department  
For and on behalf of  
STC (Dongguan) Company Limited

www.dgstc.org

Date of issue: 2012-08-08

5. eerlijke Toon





## FAQ

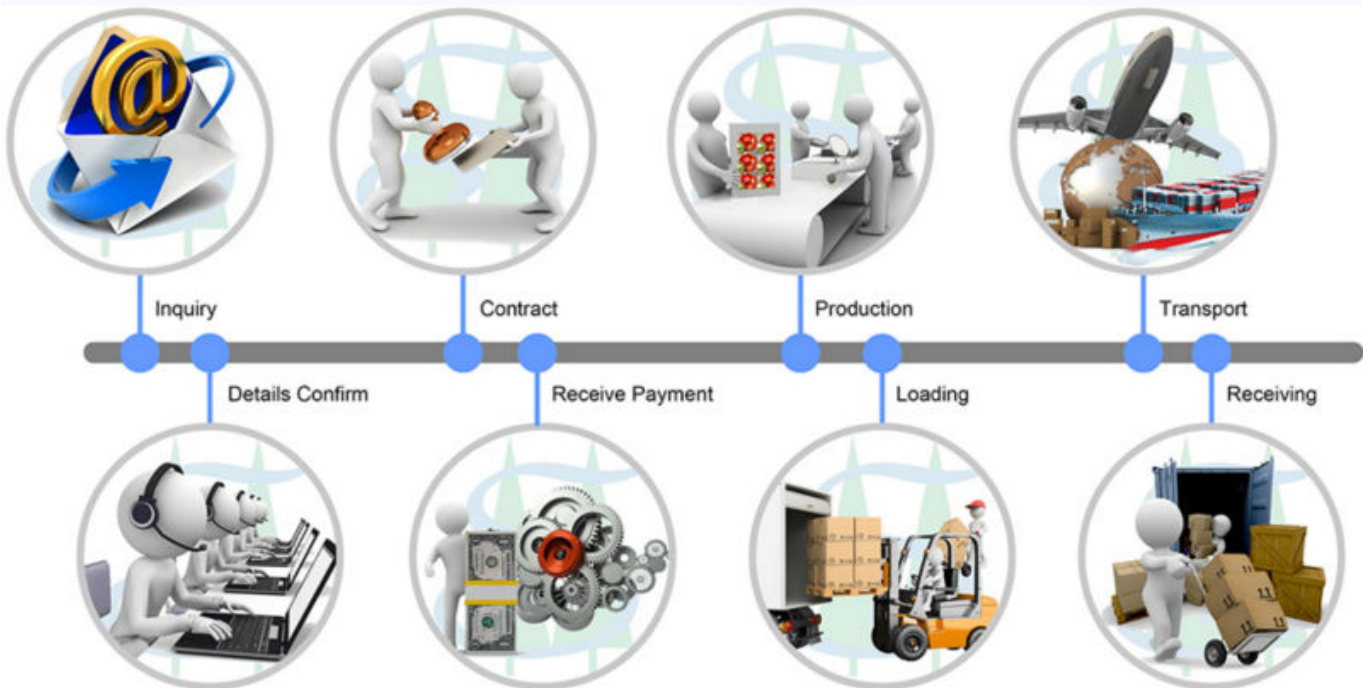
### *Waarom voor ons kiezen?*

1. meer dan twintig jaar productie ervaring & 10 jaar ervaring van de export.
2. unieke en professionele technologieën om te voldoen aan een van uw vereisten.
3. hoge kwaliteit en scherpe prijs, met goede reputatie in de overzeese markt.
4. onze producten vergelijken Europa, USA-certificate (CE, ROHS, EN71, enz.).
5. Wij zijn BSCI & SEDEX gecertificeerd leverancier.
6. klant distributie:



- |         |         |         |           |          |           |           |             |
|---------|---------|---------|-----------|----------|-----------|-----------|-------------|
| France  | Italy   | Germany | U.K.      | Spain    | Portugal  | Russia    | Netherlands |
| Belgium | Sweden  | Romania | Norway    | Greece   | Turkey    | Bulgaria  | Azerbaijan  |
| Poland  | Ukraine | Japan   | Malaysia  | Korea    | Singapore | U.S.A.    | Canada      |
| Mexico  | Panama  | Chile   | Argentina | Columbia | Brazil    | Australia | New Zealand |

**Samenwerking instrueren**



**Neem contact op met ons**

Welkom bezoek onze website voor meer informatie over de producten: <http://www.szsenhy.en.Alibaba.com/productList.html>  
 Of contacteer me voor antwoord!





Email: [rita@senhy.com](mailto:rita@senhy.com)

Skype: ritasenhy

TradeManager: cn1001806285

Tel:86-755-2854-2527-211

Fax:86-755-2854-2103

2de verdieping van het D2-  
gebouw Jihua industrie, Xihuan Road, Buji stad,  
stad van Shenzhen, Guangdong provincie,  
Volksrepubliek China.