



### **Packaging & Shipping**

packing:1 pcs/ctn

shipping:30-60days after deposit.by sea ,by air ,by express are acceptable.

## **Our Services**

Customer design: Acceptable

Changing on material: color, shape, construction: Acceptable

General inspection on fixing before packing

Third party inspection: Acceptable

## **Company Information**

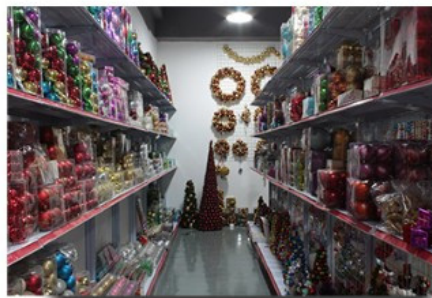
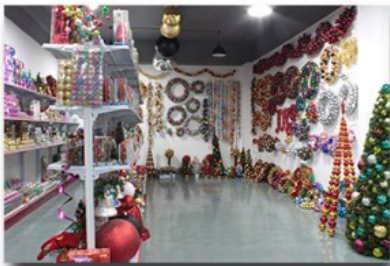
Sen Masine Christmas Arts Shenzhen Co., Ltd. is The No.5th Year Alibaba Gold Supplier member, christmas tree factory located in Jieshi Town, Lufeng City of Guangdong Province . Jieshi Town is the only Christmas products manufacturing town warranted by Guangdong Province Government.

We are a professional manufacturer with more than 20 years' manufacturing experience in this field; and we are flexible for any customized products since we have our own molding lines and are capable to make the moulds. Ther are more than 300 sets of Christmas art moulds in our factory.

Our vision is "Best quality with favorable price and best service !".

---

## **1. Our showroom**



## 2.tips style:



PVC tips



PE tips



Pine needle tips



Flocking tips



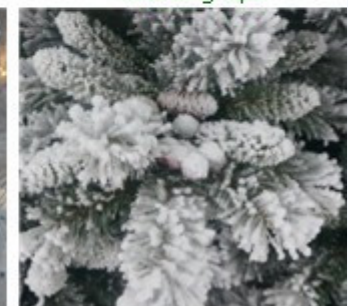
Flower needle tips



Glitter pine needle tips



White tips (branches)



Snowy tips

### 3. Our production line(workshop):



### 4. Certification



**Test Report** No.: GZHGR2014009696 Date: MAY 06, 2014 Page 1 of 3

ZHEN JIANG YIYANG ELECTRIC CO., LTD  
CHANGJIANG INDUSTRIAL PARK, YANGZHONG DEVELOPMENT ZONE, JIANGSU PROVINCE

The following sample(s) was/were submitted and identified on behalf of the applicant as

Sample Description : 塑胶光导纤维  
SGS Ref No. : GZ10040409 5/CHEM  
Sample Receiving Date : MAY 05, 2014  
Testing Period : MAY 05, 2014 TO MAY 06, 2014

Test Requested	Result
1) To determine Contents of Cadmium(Cd), Lead(Pb), Mercury(Hg), Hexavalent Chromium(CrVI), PBBs & PBDEs in the submitted sample(s) with reference to the RoHS Directive 2002/95/EC and its subsequent amendments.	PASS

Signed for and on behalf of  
SGS-CSTC Ltd.

Yan Liu  
Supervisor

This document is issued by the Company subject to its General Conditions of Service printed overleaf, available on request or accessible at [http://www.sgs.com/terms\\_and\\_conditions](http://www.sgs.com/terms_and_conditions). It and the associated related documents issued by Terms and Conditions for Electronic Instruments or apply sgs.com/terms\_and\_conditions. Attention is drawn to the inclusion of testing and prohibition clause defined therein. Any holder of this document is advised that information contained herein reflects the Company's findings at the time of the testing and is not intended to constitute a warranty, nor does it constitute an endorsement of the product or service. The Company's sole responsibility is to its Client and this document does not constitute a representation or warranty of any kind, express or implied, under the transaction documents. This document cannot be reproduced except in full without prior written approval of the Company. Any reproduction or modification of the content or appearance of this document is unlawful and offenders may be prosecuted to the fullest extent of the law. The results shown in this test report refer only to the sample(s) tested and such sample(s) are retained for 30 days only.



GZHG 655755  
www.sgs.com  
中国·广州·经济技术开发区和科学城科城路198号 邮编: 510663 1 86-20-62719999 1 86-20-62717191 1 86-20-62717191

szsenhy.en.alibaba.com



**STC Test Report**

Date: 2012-07-20

Page 1 of 3

No.: DT112719

**Applicant (SEM001)** : Sen Masine Christmas Arts (Shenzhen) CO., Ltd.  
深圳市森海洋圣诞礼品有限公司  
2nd floor of multi-building, Jihua industrial zone, Xihuan Road, Buji Town, Shenzhen City, Guangdong Province, PRC

**Description of Sample(s)** : One(1) style of submitted sample(s) said to be :  
Christmas tree with LED light  
End Use: for Christmas decoration  
Country of Origin: China  
Country of Destination: EU

**Date sample(s) Received** : 2012-07-12

**Date Tested** : 2012-07-13 to 2012-07-19

**Investigation(s) Requested** : European Standards for Safety of Toys  
- EN71-2:2011

**Conclusion(s)** : EN71-2:2011  
The submitted sample(s) **complied** with the test requirement.



FAN Ru Mei, Maggie  
Authorized Signatory  
Textiles and Materials Department  
For and on behalf of  
STC (Dongguan) Company Limited

STC (Dongguan) Company Limited

88 Fuxin Road, Dongguan, China (CN) 511712  
Customer Service Hotline: 400 888 8228 Tel: (86) 769 8111 8888 Fax: (86) 769 8111 8222  
Email: [sgs@stc.com.cn](mailto:sgs@stc.com.cn) Website: [www.stc.com.cn](http://www.stc.com.cn)  
This report shall not be reproduced unless with prior written approval from STC (Dongguan) Company Limited.  
For Conditions of Issuance of this test report, please refer to the overleaf or homepage.



### STC Test Report

Date: 2012-07-20

Page 1 of 3

No.: DT112719

**Applicant (SEM001)** : Sen Masine Christmas Arts (Shenzhen) CO., Ltd.  
深圳森马海洋圣诞礼品有限公司  
2nd floor of multi-building, Jihua industrial zone, Xihuan Road, Bujia Town, Shenzhen City, Guangdong Province, PRC

**Description of Sample(s)** : One(1) style of submitted sample(s) said to be :  
Christmas tree with LED light  
End Use: for Christmas decoration  
Country of Origin: China  
Country of Destination: EU

**Date sample(s) Received** : 2012-07-12

**Date Tested** : 2012-07-13 to 2012-07-19

**Investigation(s) Requested** : European Standard for Safety of Toys  
EN 60598-2-20:2010:2010

**Conclusion(s)** : EN112:2011  
The submitted sample(s) **complied** with the test requirement.



*Maggie*  
FAN Ru Mei, Maggie  
Authorized Signatory  
Textiles and Materials Department  
For and on behalf of  
STC (Dongguan) Company Limited

STC (Dongguan) Company Limited

28 Fuxian Road, Bujia Town, Dongguan City, Guangdong, 512719  
Customer Service Center: 400-886-0208 Fax: (86) 755-2111-8888 Fax: (86) 755-2111-8222  
Email: stc@dgstc.org Website: www.dgstc.org  
This report shall not be reproduced, stored in a retrieval system or otherwise transmitted from STC (Dongguan) Company Limited.



### STC (Dongguan) Company Limited EC DECLARATION OF CONFORMITY

**Reference Number:** LVD-D120619DOC

Sen Masine Christmas Arts (shenzhen) Co., Ltd.  
2nd floor of multi-building, Jihua industrial zone, Xihuan Road, Bujia Town, Shenzhen City,  
Guangdong Province, PRC

declare the product  
Description: Christmas tree with LED light  
Brand Name: SM  
Model: SM-20121

complies with the requirements of the  
EC Low Voltage Directive 2006/95/EC

Applicable Standards (EN) with reference numbers  
EN 60598-2-20:2010:2010 in conjunction with  
EN 60598-1:2008+A11: 2009

**General Remarks:**  
This declaration is only valid when used in conjunction with the technical file(s) refers to DE108177.  
This declaration applies specifically to the sample(s) investigated in the technical report mentioned above and not to the bulk.

The CE marking as shown below can be affixed on the product after preparation of necessary conformity documentation, as stipulated in Articles of the Council Directive 2006/95/EC.

**Manufacturer/Importer**



**Test Laboratory**



*Li Chang Jun*  
Li Chang Jun, Song  
Authorized Signatory  
Electrical Safety Department  
For and on behalf of  
STC (Dongguan) Company Limited

www.dgstc.org

Date of issue: 2012-08-08

5.fair show



## FAQ

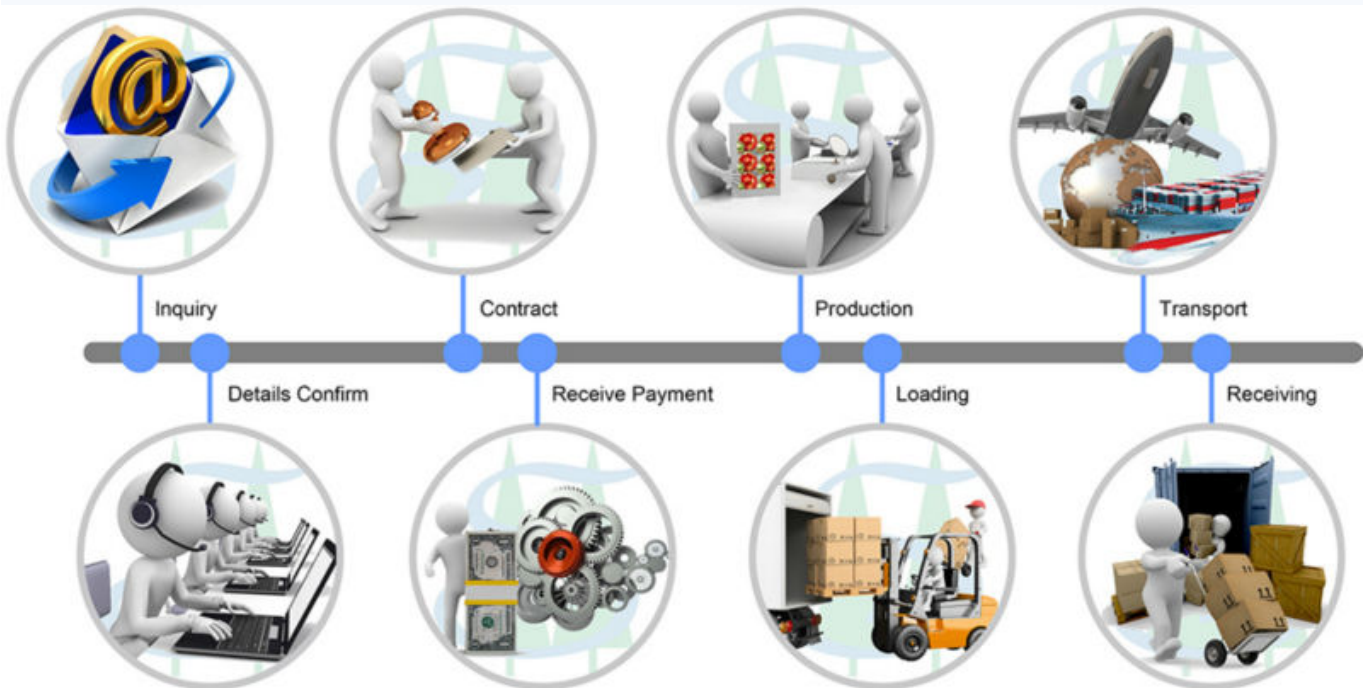
### *Why choose us?*

1. More than 20 years' manufacturing experience & 10 years export experience.
2. Unique and professional technologies to meet any of your requirements.
3. High quality and competitive price, with good reputation in the overseas market.
4. Our products match EUROPE, USA certificate(CE,ROHS, EN71,etc).
5. We are BSCI& SEDEX certified supplier.
- 6.customer distribution:



- |         |         |         |           |          |           |           |             |
|---------|---------|---------|-----------|----------|-----------|-----------|-------------|
| France  | Italy   | Germany | U.K.      | Spain    | Portugal  | Russia    | Netherlands |
| Belgium | Sweden  | Romania | Norway    | Greece   | Turkey    | Bulgaria  | Azerbaijan  |
| Poland  | Ukraine | Japan   | Malaysia  | Korea    | Singapore | U.S.A.    | Canada      |
| Mexico  | Panama  | Chile   | Argentina | Columbia | Brazil    | Australia | New Zealand |

**Cooperation instruct**



**Contact us**

Welcome visit our website for getting more products information: <http://www.szsenhy.en.alibaba.com/productlist.html>  
Or Contact me for reply!





Email: [rita@senhy.com](mailto:rita@senhy.com)

Skype: ritasenhy

TradeManager: cn1001806285

Tel:86-755-2854-2527-211

Fax:86-755-28542133

Add: 2nd Floor of D2-Building, Jihua Industry,  
Xihuan Road, Buji Town, Shenzhen City,  
Guangdong Province, PRC.