

Christmas pre-lit tree factory supplier





Packaging & Shipping

packing:1 pcs/ctn

shipping:30-60days after deposit.by sea ,by air ,by express are acceptable.

Our Services

Customer design: Acceptable

Changing on material: color, shape, construction: Acceptable

General inspection on fixing before packing

Third party inspection: Acceptable

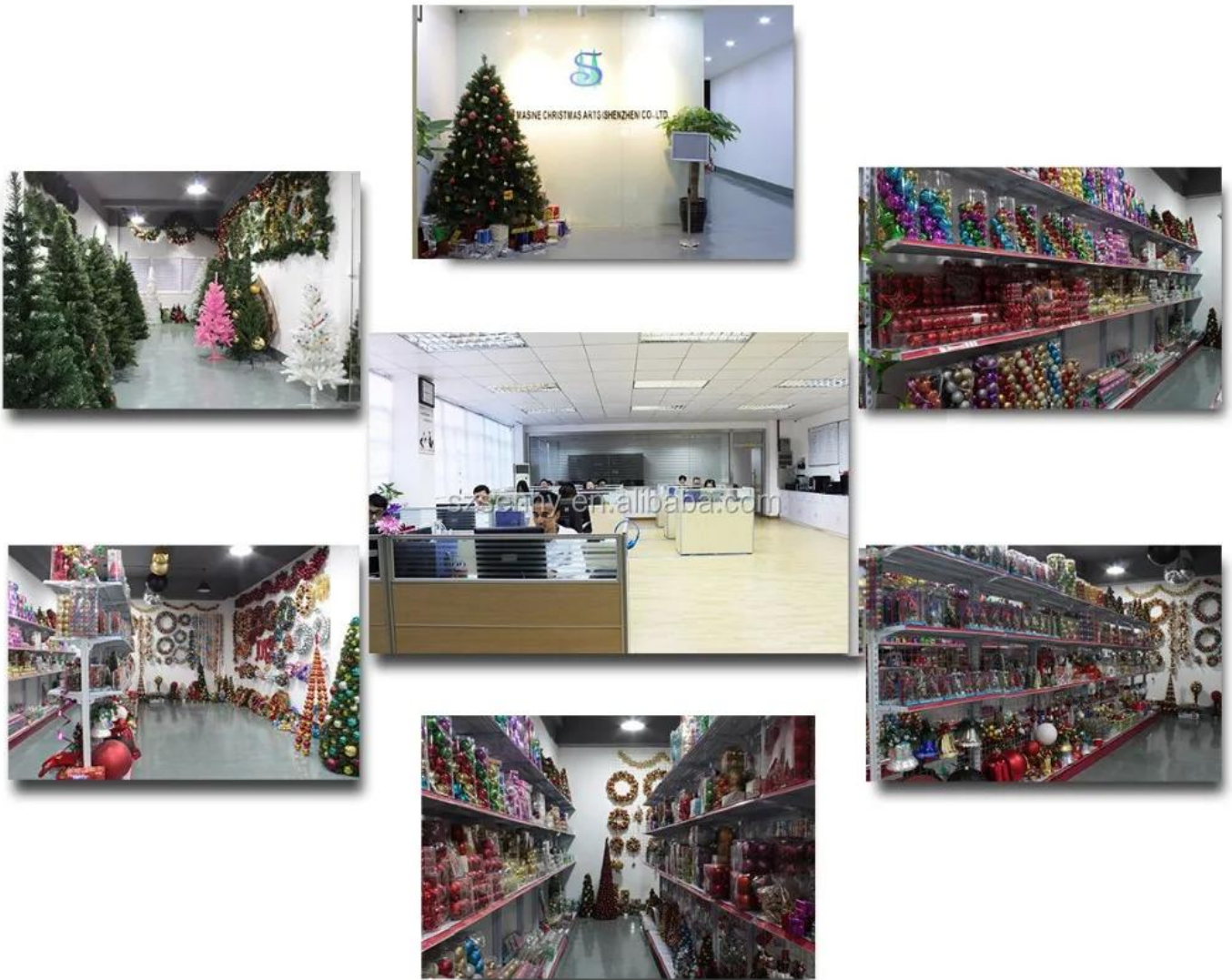
Company Information

Sen Masine Christmas Arts Shenzhen Co., Ltd. is The No.5th Year Alibaba Gold Supplier member, located in Jieshi Town, Lufeng City of Guangdong Province . Jieshi Town is the only Christmas products manufacturing town warranted by Guangdong Province Government.

We are a professional manufacturer with more than 20 years' manufacturing experience in this field; and we are flexible for any customized products since we have our own molding lines and are capable to make the moulds. Ther are more than 300 sets of Christmas art moulds in our factory.

Our vision is "Best quality with favorable price and best service !".

1. Our showroom



2.tips style:



PVC tips



PE tips



Pine needle tips



Flocking tips



Flower needle tips



Glitter pine needle tips



White tips (branches)



Snowy tips

3. Our production line(workshop):



4.Certification



Test Report No.: GZHGR2014009696 Date: MAY 06, 2014 Page 1 of 3

ZHEN JIANG YIYANG ELECTRIC CO., LTD
CHANGJIANG INDUSTRIAL PARK, YANGZHONG DEVELOPMENT ZONE, JIANGSU PROVINCE

The following sample(s) was/were submitted and identified on behalf of the applicant as

Sample Description : 塑胶光纤棒
SGS Ref No. : GZ10040409 5/CHEM
Sample Receiving Date : MAY 05, 2014
Testing Period : MAY 05, 2014 TO MAY 06, 2014

Test Requested	Result
1) To determine Contents of Cadmium(Cd), Lead(Pb), Mercury(Hg), Hexavalent Chromium(Cr(VI)), PBBs & PBDEs in the submitted sample(s) with reference to the RoHS Directive 2002/95/EC and its subsequent amendments.	PASS

Signed for and on behalf of
SGS-CSTC Ltd

Yan Liu
Supervisor

This document is issued by the Company subject to its General Conditions of Service printed overleaf, available on request or downloadable at <http://www.sgs.com/rohs>, and, furthermore, the use for purposes other than those intended by the Company is prohibited. Any person using this document is advised that information contained herein reflects the Company's findings at the time of testing and is not intended to constitute a warranty or representation of any kind. The Company's sole responsibility is to its Client and this document does not constitute a contract. The Company's liability is limited to the amount of the fee paid for the testing and analysis. The Company is not responsible for any loss or damage, including consequential loss or damage, arising from the use of this document. The Company is not responsible for any loss or damage, including consequential loss or damage, arising from the use of this document. The Company is not responsible for any loss or damage, including consequential loss or damage, arising from the use of this document.

SGS
GZNG 655755
Member of the SGS Group (SGS SA)



STC Test Report

Date: 2012-07-20

Page 1 of 3

No.: DT112719

Applicant (SEM001) : Sen Masine Christmas Arts (Shenzhen) CO., Ltd.
深圳市森海洋圣诞礼品有限公司
2nd floor of multi-building, Jihua industrial zone, Xihuan Road, Buji Town, Shenzhen City, Guangdong Province, PRC

Description of Sample(s) : One(1) style of submitted sample(s) said to be :
Christmas tree with LED light
End Use: for Christmas decoration
Country of Origin: China
Country of Destination: EU

Date sample(s) Received : 2012-07-12

Date Tested : 2012-07-13 to 2012-07-19

Investigation(s) Requested : European Standards for Safety of Toys
- EN71-2:2011

Conclusion(s) : EN71-2:2011
The submitted sample(s) complied with the test requirement.



YAN Ru Mei, Maggie
Authorized Signatory
Textiles and Materials Department
For and on behalf of
STC (Dongguan) Company Limited

STC (Dongguan) Company Limited

88 Fuxin Road, Dongguan, Guangdong, China, 516770
Customer Service Hotline: 400 820 820 / Tel: +86 769 8111 8888 / Fax: +86 769 8111 8888
Email: sgs@stc.com.cn / Website: www.sgs.com
This report shall not be reproduced without prior written approval from STC (Dongguan) Company Limited.
For Conditions of Service of this test report, please refer to the contract or homepage.



STC Test Report

Date: 2012-07-20

Page 1 of 3

No.: DE112719

Applicant (SEMOE): Sen Masine Christmas Arts (Shenzhen) CO., Ltd.
深圳市宝安区西乡街道西乡社区西乡大道201号2楼201室
2nd floor of multi-building, Xixuan industrial zone, Xixuan Road, Baji Town, Shenzhen City, Guangdong Province, PRC

Description of Sample(s): One (1) style of submitted sample(s) said to be:
Christmas tree with LED light
End Use: for Christmas decoration
Country of Origin: China
Country of Destination: EU

Date sample(s) Received: 2012-07-12

Date Tested: 2012-07-13 to 2012-07-19

Identification (if applicable): European Standard for Safety of Toys

Conclusion(s): EN71-2:2011
The submitted sample(s) **complied** with the test requirement.



FAN
FAN Ru Mei, Maggie
Authorized Signatory
Textiles and Materials Department
For and on behalf of
STC (Dongguan) Company Limited

STC (Dongguan) Company Limited

4th Floor, Huiyuan Plaza, Dongguan City, Guangdong Province, PRC
Dongguan Service Center: Tel: 86-769-22111111 Fax: 86-769-22111111
Shenzhen Service Center: Tel: 86-755-22111111 Fax: 86-755-22111111
This report shall not be reproduced without the prior written approval of STC (Dongguan) Company Limited.



STC (Dongguan) Company Limited EC DECLARATION OF CONFORMITY

Reference Number: LVD-D120619DOC

Sen Masine Christmas Arts (Shenzhen) Co., Ltd.
2nd floor of multi-building, Xixuan industrial zone, Xixuan Road, Baji Town, Shenzhen City,
Guangdong Province, PRC

declares the product
Description: Christmas tree with LED light
Brand Name: SM
Model: SMA20121

complies with the requirements of the
EC Low Voltage Directive 2006/95/EC

Applicable EN (and/or) with related standards:
EN 60598-2-20:2010 based on information with
EN 60598-1:2008+A11: 2009

General Remarks:

This declaration is only valid when used in conjunction with the technical files, referred to (EN 106177).

This declaration applies specifically to the sample(s) investigated in the technical report mentioned above and not to the bulk.

The CE marking as shown below can be affixed on the product after preparation of necessary conformity documentation, as stipulated in Articles of the Council Directive 2006/95/EC.

Manufacturer/Importer



Test Laboratory

Li Chang Jun
Li Chang Jun, Test
Authorized Signatory
Electrical Safety Department
For and on behalf of
STC (Dongguan) Company Limited

www.stcplz.org

Date of issue: 2012-08-08

5.fair show



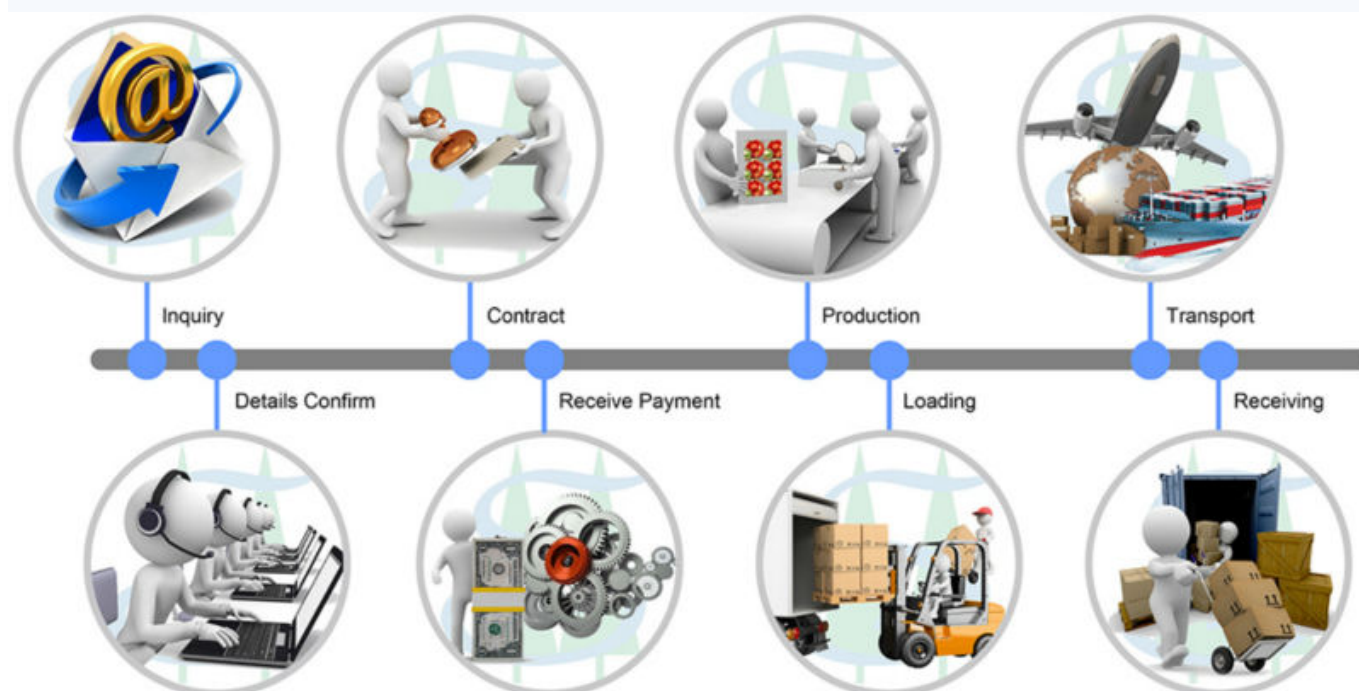
FAQ

Why choose us?

1. More than 20 years' manufacturing experience & 10 years export experience.
2. Unique and professional technologies to meet any of your requirements.
3. High quality and competitive price, with good reputation in the overseas market.
4. Our products match EUROPE, USA certificate(CE, ROHS, EN71, etc).
5. We are BSCI & SEDEX certified supplier.
6. customer distribution:



Cooperation instruct



Contact us

Welcome visit our website for getting more products
 information: <http://www.szsenhy.en.alibaba.com/productlist.html>
 Or Contact me for reply!



Email: rita@senhy.com

Skype: ritasenhy

TradeManager: cn1001806285

Tel:86-755-2854-2527-211

Fax:86-755-28542133

Add: 2nd Floor of D2 Building, Jihua Industry,
Xihuan Road, Buji Town, Shenzhen City,
Guangdong Province, PRC.