

Product Presentation:









Product Specification:

| | |
|----------------------|-----------------------------|
| Product Type: | Christmas shatterproof ball |
| Material: | Plastic |
| Diameter: | 60mm/80mm |

| | |
|-----------------------|---|
| MOQ: | 3,000 pcs |
| Packing: | Poly bag |
| Payment term: | L/C, T/T(30% deposit), West Union, Paypal, Cash |
| Delivery term: | CIF, FOB SHENZHEN, EXPRESS, BY AIR |
| Certificate: | Reach, ROHS, EN71, CE etc |

Packing:

GIFT BOX



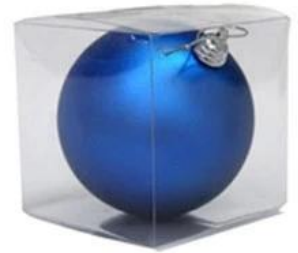
WHITE BOX



PVC TUBE



PVC BOX



GIFT BOX



GIFT BOX



GIFT BOX



PVC TUBE



Loading:



Production Process:



1. Prototype



2. Oiling



3. Electroplating



4. Spraying



5. Drying



6. Assembling

Our Factory:



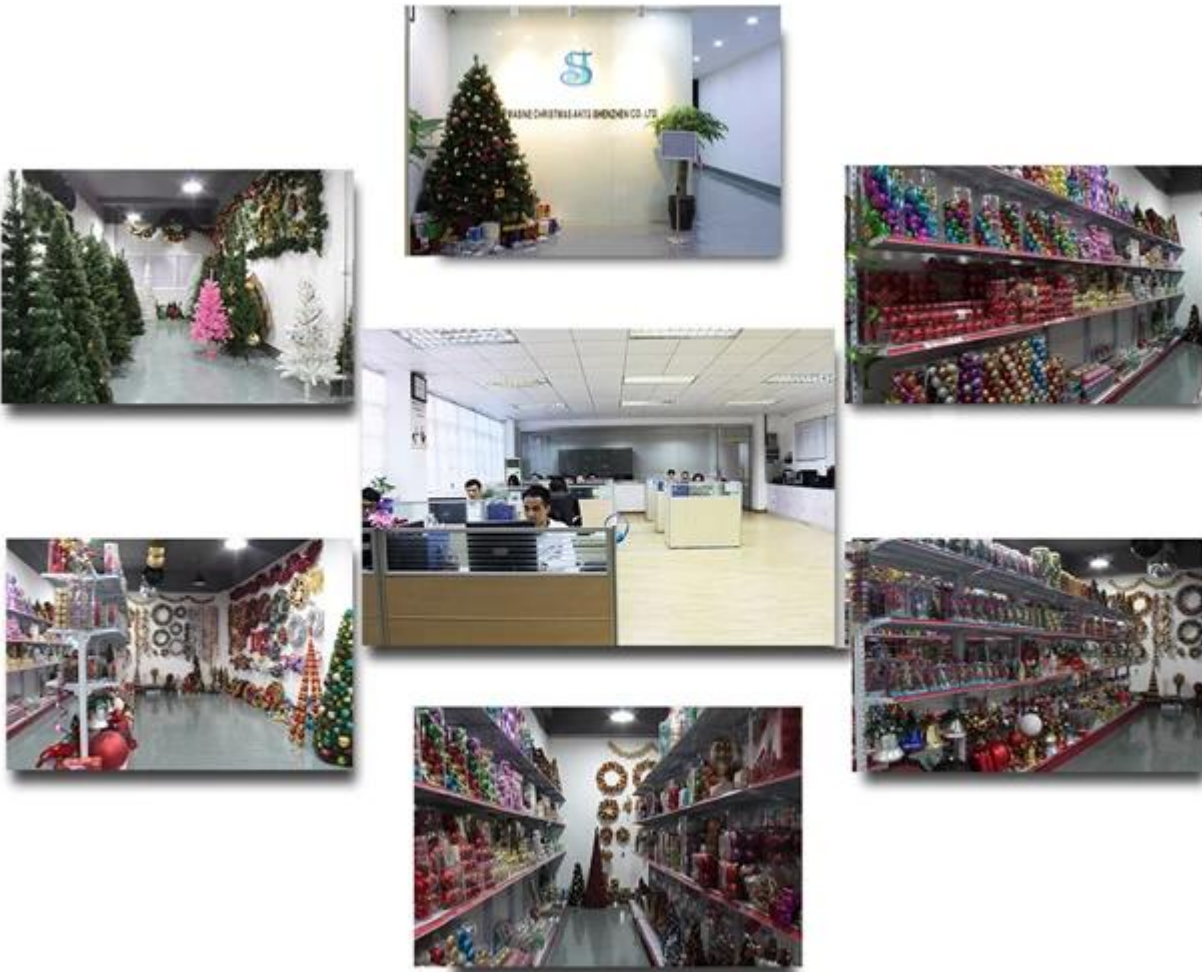
Certifications:

CERTIFICATE

QUALITY ASSURANCE SECURITY TRUST



Showroom:



Company Profile:

ABOUT US



Sen Masine Christmas Arts (Shenzhen) Co.,Ltd.

is a professional manufacturer of Christmas balls and Christmas trees of choice for some of the top names in retail and merchandising since 1996. We are capable of supplying different styles of products and doing OEM or customization which with high quality and competitive price. Meanwhile, we're BSCI & SEDEX certified manufacturer and committed to using safe and environmental materials for all our products.



OUR ADVANTAGES

Sen Masine Christmas Arts (Shenzhen) Co., Ltd

is a China based manufacturer who is specializing in production of Christmas ball and Christmas tree since 1996. We're committing to supplying good quality products with competitive prices for customers, which also win us good reputation from the oversea markets.

Company's Advantages:

1. We are BSCI and SEDEX certified manufacturer. More certificates including ISO, ROHS, REACH, CE, EN71 are available.
2. With more than 20 years manufacturer experience and 10 years export experience
3. We are supplier of retail giants and famous brands such as TESCO, ALDI, QVC, CTS, BBB, KMART COCA-COLA etc.
4. We can produce 100,000 pcs Christmas balls and 1,000 Christmas trees per day.
5. Experienced inspector team to ensure your goods will be produced with high quality. 3rd party inspection is acceptable.
6. Good pre-sales and after-sales service to answer your questions within 24 hours.
7. We've cooperative and harmonious relations with all our suppliers.
8. We can take large order and urgent order to priority.

